

## Introduction

The Beamax IR remote control set can be used to remotely control electrical projection screens. This set only works with 240V motors, it can not be used with 24V motors. The IR remote can be used with a programmable remote. To set up your programmable remote control, please consult the manual of your programmable remote control.

## Installation guidelines

We recommend that the remote control receiver is installed by a qualified electrician and that local safety regulations are respected. Please note that an IR remote control needs a free line of sight between the remote and the receiver unit. If this is not possible, either a 12V trigger or a RF remote control can be used. Both options are available from Beamax.

## Connecting the IR eye to the receiver.

The IR eye (see image A) should be connected to the receiver unit as shown in image B. When mounting the receiver module and IR eye, please make sure the eye is in sight. If it is not in sight, it will not be able to receive the IR signal and the screen can not be operated.

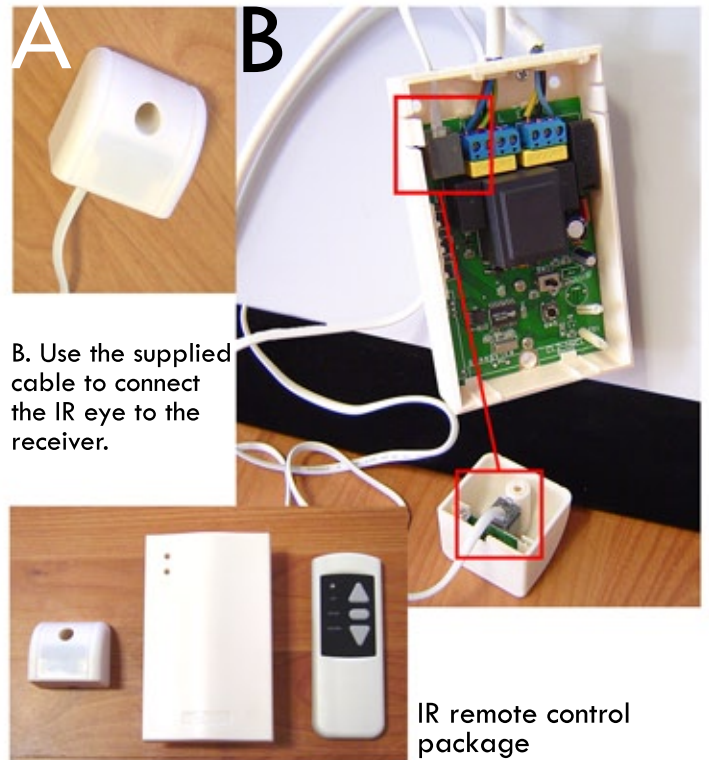
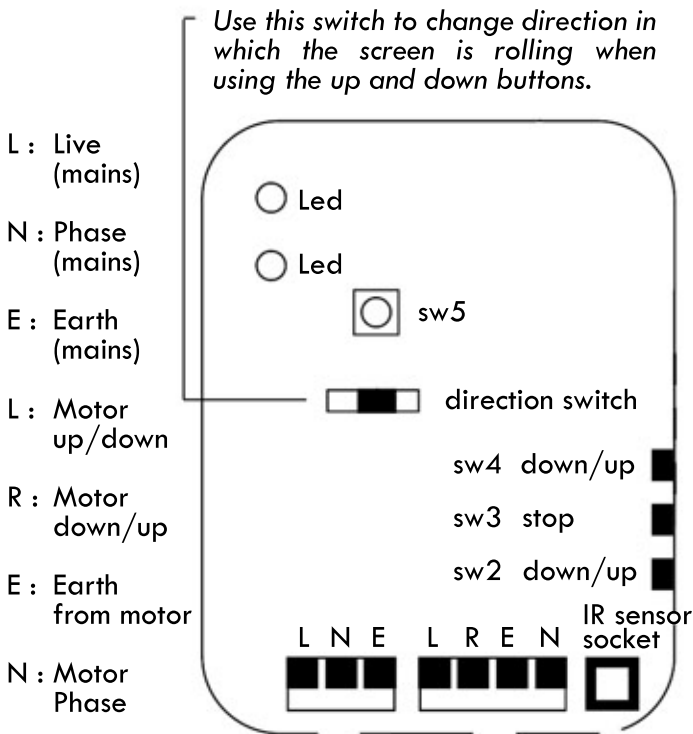
## Programming the control unit

On the receiver unit, press the "SW5" button, until the light starts flashing. Press the "up" button on the remote unit to program it.

To delete a unit, repeat the operation above, but press the down button instead.

## Wiring the receiver module

The receiver module needs to be connected to the screen and mains power. The wiring diagram can be found below.



## Maintenance and other specifications

The battery will last for 2 years if being used for about 4 times a day. When the battery is empty, the LED light will not come on when a button is pressed and the control signal will not be sent. When replacing the battery, use a 12V 23A battery.

The system works best in temperatures of +5° to +40° Celsius.

Maximum operating distance is 25 meter.



**Problem solving:**

- The screen does not respond when using the remote.

*possible solutions:*

Check the batteries of the remote. Replace them when empty or position the batteries correctly.

Check if the screen can be operated by using the buttons on the receiver unit. If not, the receiver might not be wired correctly.

Please make sure there is a free line of sight between the remote control and the receiver unit.

-The screen rolls up when pressing the down button vice-versa.

Put the direction switch on the receiver in a different position.

If your problem can not be solved or you have any other questions, please consult your reseller or contact Beamax at [info@beamax.com](mailto:info@beamax.com).