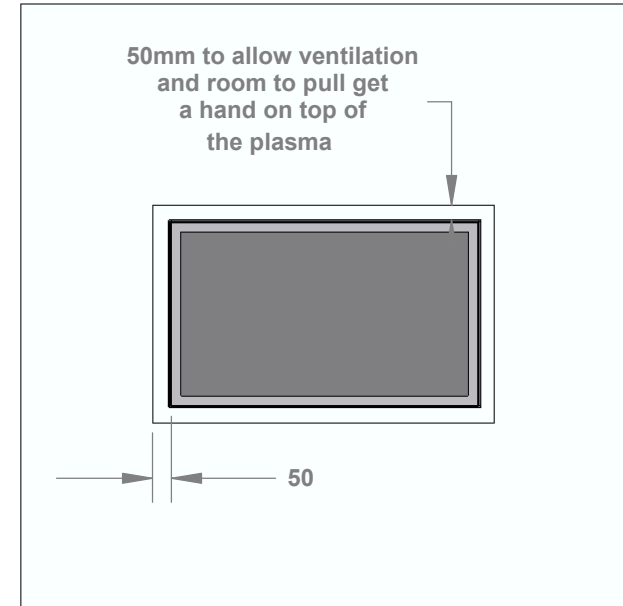
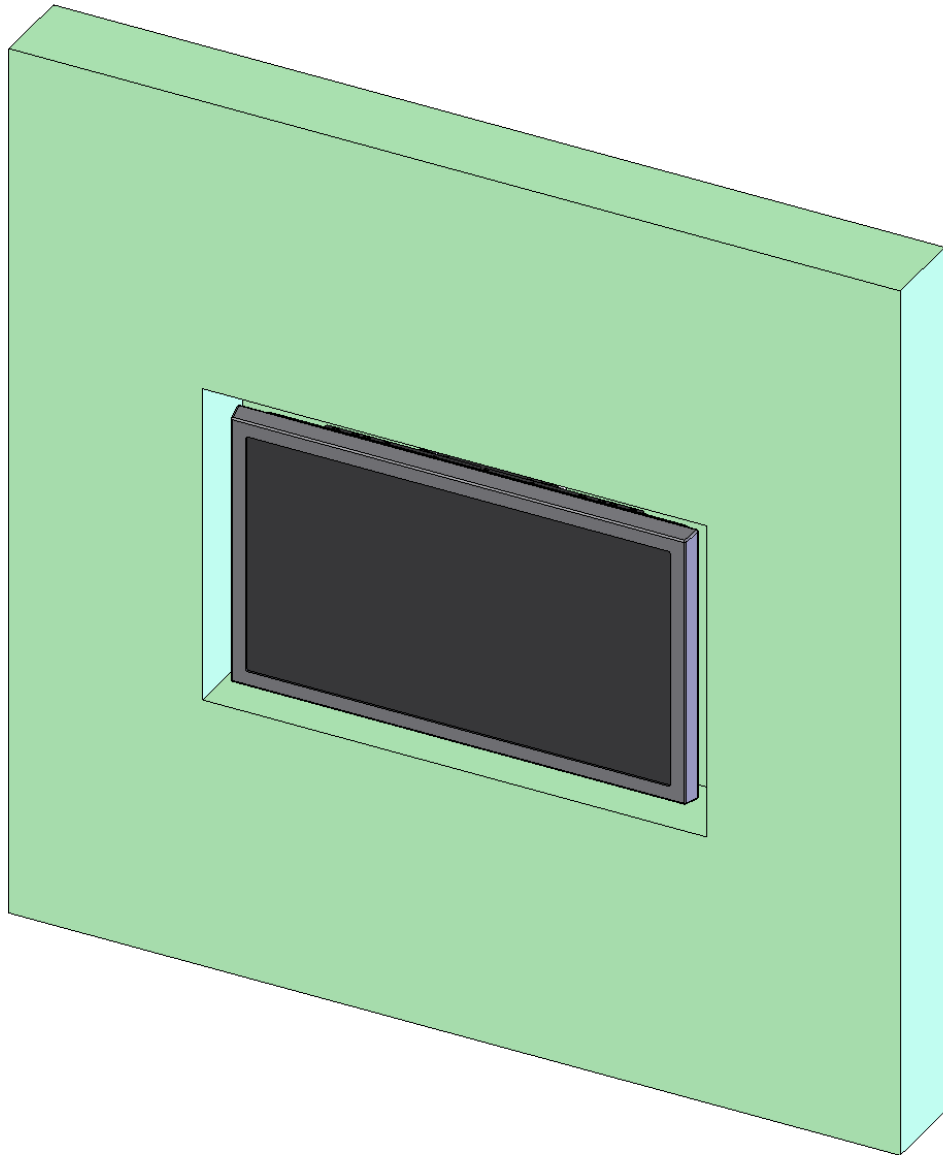


RECESS MOUNTING WITH A PS42/50 SWIVEL BRACKET



When recess mounting a plasma on a Future Automation Swivel Bracket the gap around the edge could be as little as 3mm. Ventilation would have to be provided by opening the top and maybe the bottom of the recess.

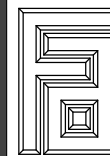
Larger gaps of 50mm around the plasma screen enable some ventilation and enough room to grab hold of the plasma to pull it out.

With the add on motor kit a gap of at least 20mm is required on each side with at least 10mm top and bottom.

WALL FIXINGS

NO FIXINGS SUPPLIED WITH THIS PRODUCT. CONSIDER RAWLBOLTS OR RESIN ANCHOR. RESIN ANCHORS ARE IDEAL FOR SOFTER BRICKWORK/BLOCKS.

www.futureautomation.co.uk

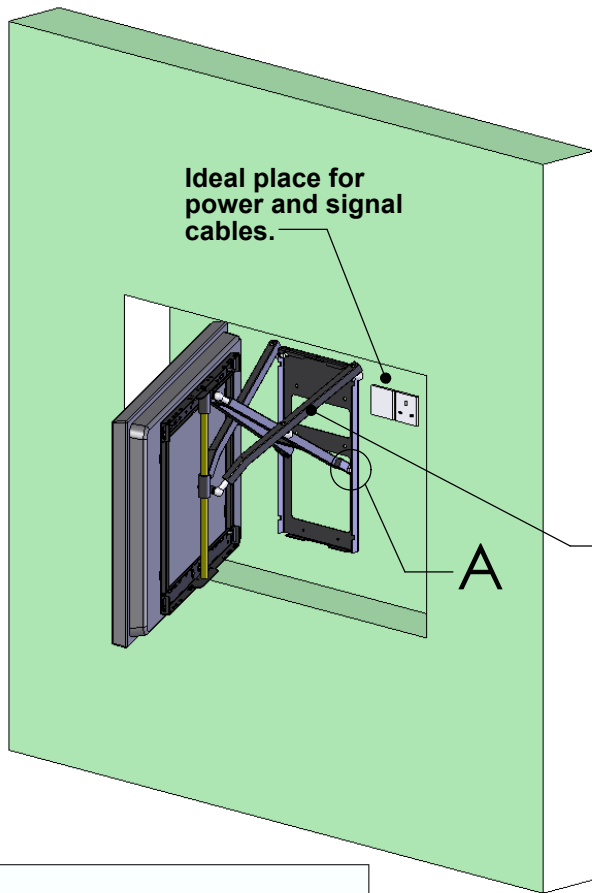


PS42,50

PLASMA SWIVEL
BRACKET

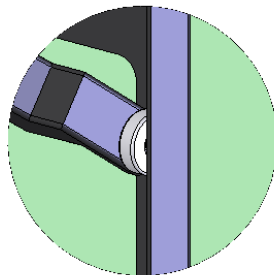
20/05/2005

Sheet 1 of 3

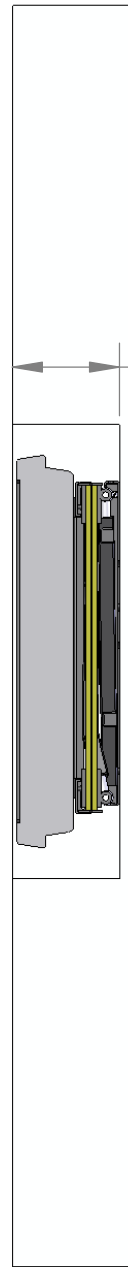


Ideal place for power and signal cables.

Cables are run down this arm.



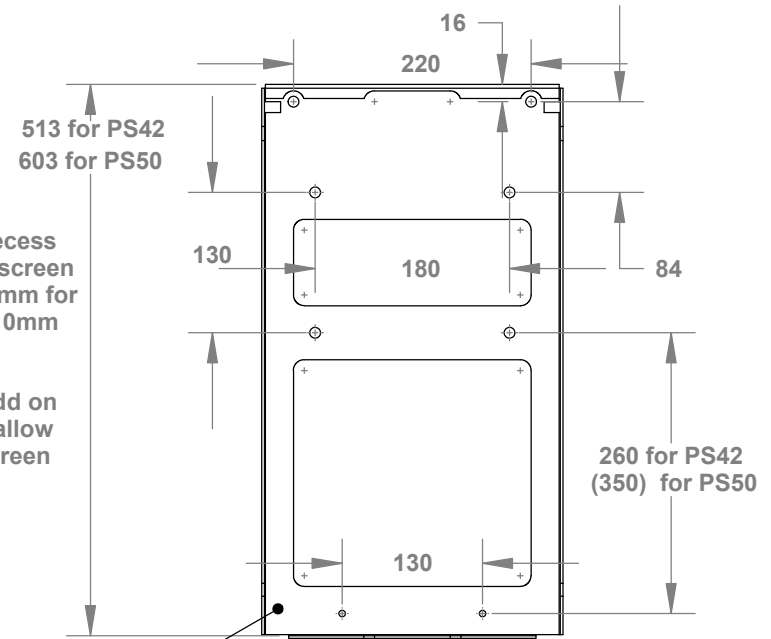
DETAIL A
SCALE 1 : 3



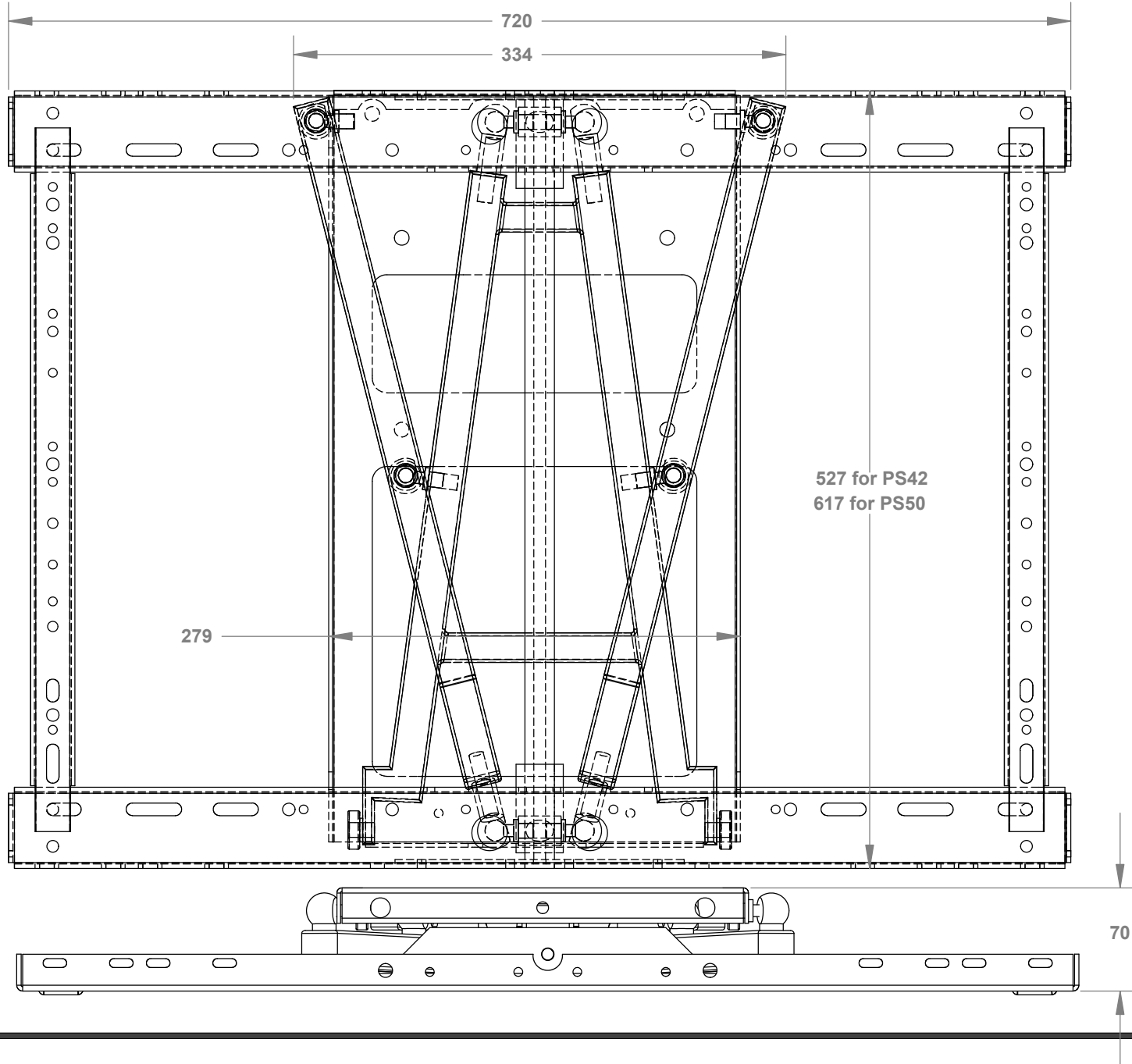
Depth of recess should be screen depth + 70mm for bracket + 10mm spare.

With the add on motor kit allow 95mm + screen depth.

WALL PLATE

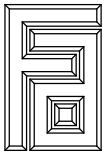


The whole area of the wall plate needs to be well supported. Ideally solid plaster over brickwork. If stud work then thick timber (50mm) to screw into around the top six mounting holes. The lower part of the wall plate needs to be over 18mm ply/MDF as the bearings shown on the sketch on the left push with some force into the wall.



NOTES

www.futureautomation.co.uk



20/05/2005 Sheet 3 of 3