

NÜVÖ[®]

Whole Home Audio



NV-ZA215 Zone Amplifier System


Installation and User Guide

FCC Radio Frequency Interference Statement Warning

This equipment has been tested and found to comply with the limits for a Class B digital device, pursuant to Part 15 of the FCC Rules. These limits are designed to provide reasonable protection against harmful interference in a residential installation. This equipment generates, uses, and can radiate radio frequency energy and, if not installed and used in accordance with the instructions, it may cause harmful interference to radio communications. However, there is no guarantee that interference will not occur in a particular installation. If this equipment does cause harmful interference to radio or television reception, which can be determined by turning the equipment off and on, the user is encouraged to try to correct the interference by one or more of the following measures:

- Reorient or relocate the receiving antenna.
- Increase the separation between the equipment and receiver.
- Connect the equipment into an outlet on a circuit different from that to which the receiver is connected.
- Consult the dealer or an experienced radio/TV technician for assistance.

This device complies with Part 15 of the FCC Rules. Operation is subject to the following two conditions: (1) This device may not cause harmful interference, and (2) this device must accept any interference received, including interference that may cause undesired operation.

 EN55022 Class-B
EN55024

IC Statement

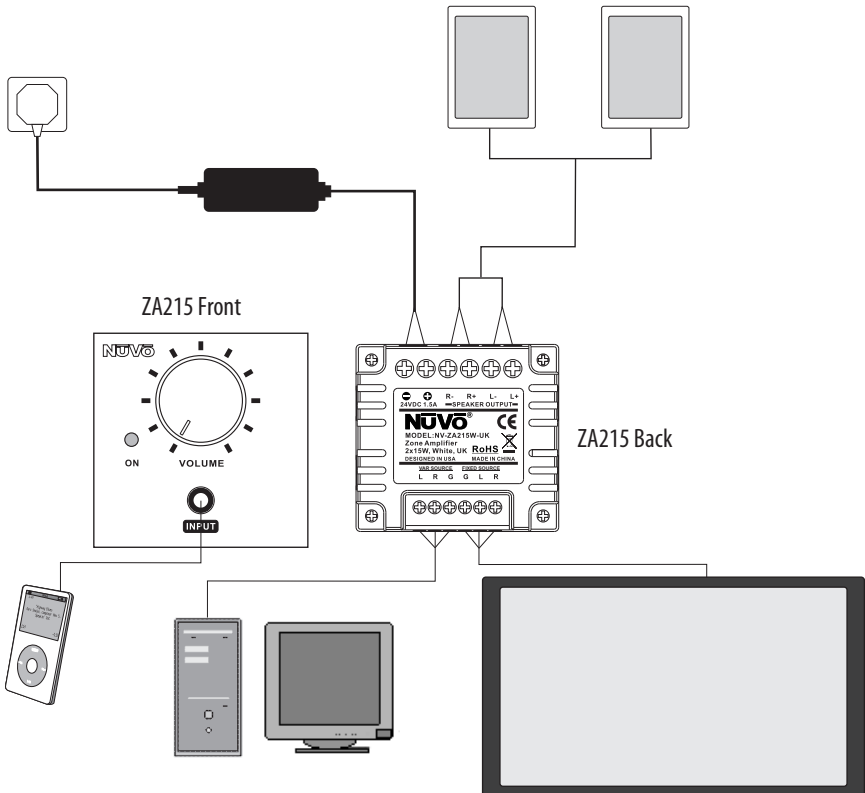
This Class B digital apparatus complies with Canadian ICES-003.

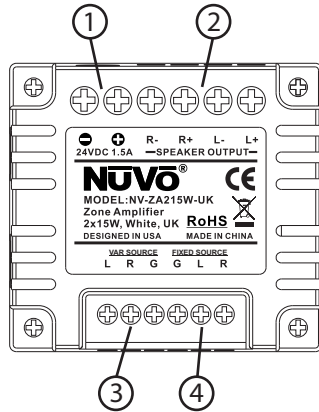
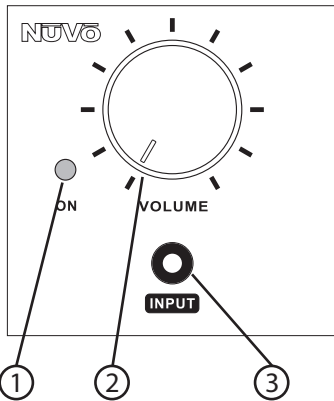
Introduction

The ZA215 is a versatile 30-watt in wall zone amplifier perfectly suited to a variety of tasks. Its design allows any line level source to be permanently wired into the back panel as either a variable or fixed input, and an optional front panel stereo mini input allows any local source to be easily amplified to dedicated speakers.

The ZA215 fits in educational classroom settings, doctors' offices, hotels, and many other installations where a compact, inexpensive amplifier solution is needed.

NV-ZA215 Wiring Diagram





NV-ZA215 Front and Back Panel features

Front Panel

- 1. On LED:** This LED will light when the amplifier is turned on.
- 2. Volume Knob:** The volume knob turns the amplifier on and off, and controls the volume output to the attached speakers.
- 3. Input:** This is a stereo mini, 3.5mm, audio input designed to accept a line-level audio signal from any attached audio source. This input will automatically override the hardwired back panel inputs, and is controlled by the front panel volume knob.

Back Panel

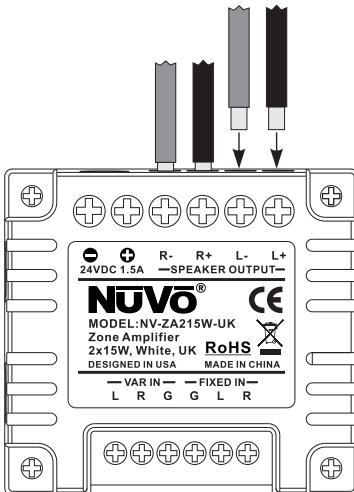
- 1. DC Input:** This 24V DC, 1.5A input connects to the included power supply. Once connected, the power supply can plug into any AC power source.
- 2. Speaker Output:** The speaker output section terminates standard audio wire. This provides the amplified audio signal to the attached speakers. The NV-ZA215 is designed for a pair of 8-ohm speakers or a single stereo speaker rated at 8-ohms per channel.
- 3. Var Source:** The variable input terminates in the same way as the variable input, but it requires a separate third party volume control other than the ZA215 volume knob.

Installing the NV-ZA215

Step 1: Locate the desired location of the ZA215. It is designed to fit into a standard 45mm deep UK back box. The ZA215 dimensions are a standard 50 x 50mm UK size, and has a screwless trim plate kit included in the package. Make the appropriate cutout for the mounting back box. The amplifier itself is compatible with standard 50 x 50mm wall plates.

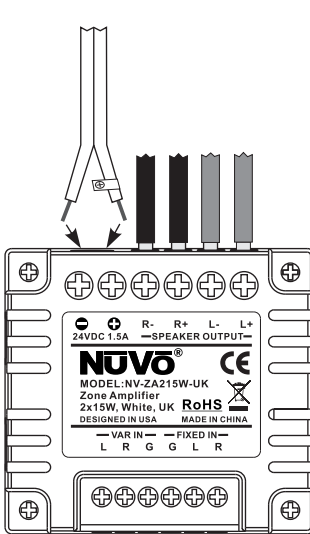
Step 2: Define the best location for the speakers that will be connected to the ZA215 amplifier. These can be in wall, in ceiling, floor standing, or bookshelf speakers, but should not present less than an 8-ohm load to the amplifier. 16-gauge speaker wire, either two or four conductor, is recommended for this purpose. The wire should be routed to the cutout for the ZA215 for

Fig. 1



Step 3: Along with the speaker wire, route the power supply to the same cutout and terminate the positive and negative leads at the back of the ZA15, as shown in fig. 2.

Fig. 2



Step 4: Connect the optional back panel audio inputs. There are two hardwired audio inputs on the back of the ZA215. They are fixed, FIXED SOURCE, which will be controlled by the ZA215's front panel volume pot, and variable, VAR SOURCE, which would be an input from a fixed source, such as an AV receiver that has its own volume control. The ZA215 volume pot has no control of this input. **You should not use both the fixed and variable inputs simultaneously. The decision on which input to use should be made prior to the installation.**

To make the termination, strip the left, right and ground leads on the input side of a stereo RCA or stereo mini, 3.5mm audio cable. Terminate those leads into the appropriate screw down terminals

Step 5: When the desired inputs on the ZA215 are complete, screw the mounting plate into the installed back box.

Step 6: Snap the ZA215 into the installed mounting plate and install the screwless trim plate over the entire assembly.

The ZA215 is now ready for operation. When it is turned on, the ON LED will light. Any incoming signal wired to the back panel will be amplified to the attached speakers. When an audio source is

NV-ZA215 Specifications

Power Amplifier Output

Continuous Average Output Power	30W (15W x 2)
Two channels driven 60-20kHz @10% THD	
Rated Distortion (1/2 power)	0.40%
Rated Impedance	4 Ohms
Frequency Response (60-20kHz)	±3 dB

Source Input

Front	3.5mm Stereo Jack
Input Impedance	20K
Input Sensitivity for Rated Power	300mV RMS

Back

Variable Input	Screw Terminal
Input Impedance	20K
Input Sensitivity for Rated Power	300mV RMS

Power Requirements

Power Supply	24VDC
Power Consumption at maximum available output	35W
Power Consumption no signal	2.1W

Approvals

CE-EMC, LVD
FCC
Canada Safety Listing
Australia C-Tick

Physical Specifications

Unit Size Millimeters	87 H x 87 W x 57 D
Unit Size Inches	3 7/16 H x 3 7/16 W x 2 1/4 D
Shipping Size Millimeters	265 x 558 x 375
Shipping Size Inches	10 1/2 x 22 x 14 3/4
Unit Weight Kilograms	0.11
Unit Weight Pounds	0.25
Shipping Weight Kilograms	<u> </u> 7.5

NuVo Technologies LLC Hebron, KY USA
www.nuvotechnologies.com



NVZA213 1017