



Combined  
data sheet  
**WMS-600**

600W SWITCHING MODULE FOR USE WITH RAK8-MB



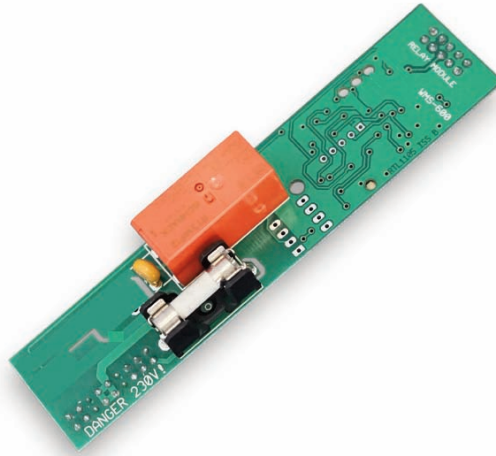
**WHAT IS IT ?**

The WMS-600 is a pluggable switching module to be used with the RAK8-MB.

The unit is plugged directly into one of the slots on the RAK8-MB.

The WMS-600 is for use with non dimmable lighting loads, extractor fans or any other switched mains output applications.

The WMS-600 pluggable module is for use with non dimmable loads or other outputs that require mains switching.



The WMS-600 combines with the RAK8-MB to provide a centralised lighting control system that can integrate with either wireless or wired Rako products.

As with all RAK8 pluggable modules no memory is stored on the WMS-600. All programming is stored on the motherboard meaning the WMS-600 can be swapped with any other module without the need to be re-programmed.

For other fitting types please refer to the datasheet for:

WMT-400

WML-400

WDA-600



Combined

# data sheet WMS-600

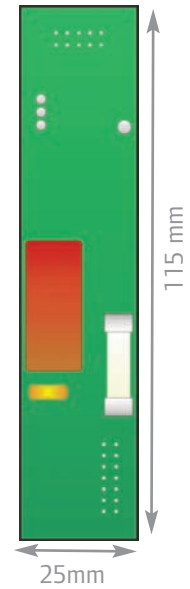
600W SWITCHING MODULE FOR USE WITH RAK8-MB



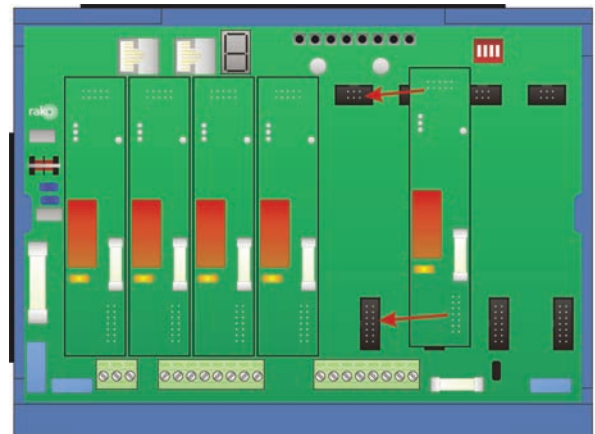
## technical data

dimensions	115x25x24mm
maximum loading	600W
minimum loading	1W
Weight	55g
climate range	Temperature +2C to +40C Humidity +5% to 95% non condensing
standards	Emissions - EN61000-6-3 : 2001 Immunity - EN61000-6-1 : 2001
communication	RS485 to other RAKs, RX-Link and RAK-Link
connections	Pluggable module

## mechanical data



## connection details



telephone +44 (0) 1634 226666 fax +44 (0) 1634 226667 [www.rakocontrols.com](http://www.rakocontrols.com)